

TURTLE CREEK EAST

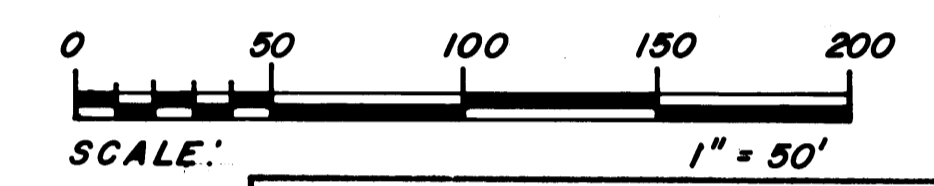
SEC. 23, TWP. 40S., R6E. 42E.
MARTIN COUNTY, FLORIDA

I, LOUISE V. ISAACS, CLERK OF THE CIRCUIT COURT OF MARTIN COUNTY, FLORIDA, HEREBY CERTIFY THAT THIS PLAT HAS BEEN FILED FOR RECORD IN PLAT BOOK 8, PAGE 64 PUBLIC RECORDS OF MARTIN COUNTY, FLORIDA, THIS DAY OF _____, A. D. 19____.

LOUISE V. ISAACS, CLERK
MARTIN COUNTY, FLORIDA

BY _____

FILE NO. _____



JANUARY 1981

CURVE DATA			
A Δ = 90°00'00" R = 25.00' LA = 39.27'	B Δ = 50°00'00" R = 25.00' LA = 21.82'	C Δ = 90°00'00" R = 25.00' LA = 39.27'	D Δ = 90°00'00" R = 25.00' LA = 39.27'
E Δ = 90°00'00" R = 25.00' LA = 39.27'	F Δ = 90°00'00" R = 25.00' LA = 39.27'	G Δ = 90°00'00" R = 25.00' LA = 39.27'	H Δ = 54°16'29" R = 25.00' LA = 23.68'
I Δ = 95°36'30" R = 25.00' LA = 41.72'	J Δ = 206°10'54" R = 40.00' LA = 143.94'	JJ Δ = 49°20'27" R = 40.00' LA = 34.45'	K Δ = 222°52'27" R = 50.00' LA = 194.49'
KK Δ = 27°39'17" R = 50.00' LA = 24.13'	L Δ = 70°31'44" R = 25.00' LA = 30.77'	M Δ = 90°00'00" R = 35.00' LA = 39.27'	N Δ = 40°00'00" R = 50.00' LA = 34.91'
O Δ = 70°31'44" R = 25.00' LA = 30.77'	P Δ = 250°31'44" R = 50.00' LA = 218.63'		

SURVEYOR'S NOTES

MONUMENTATION:

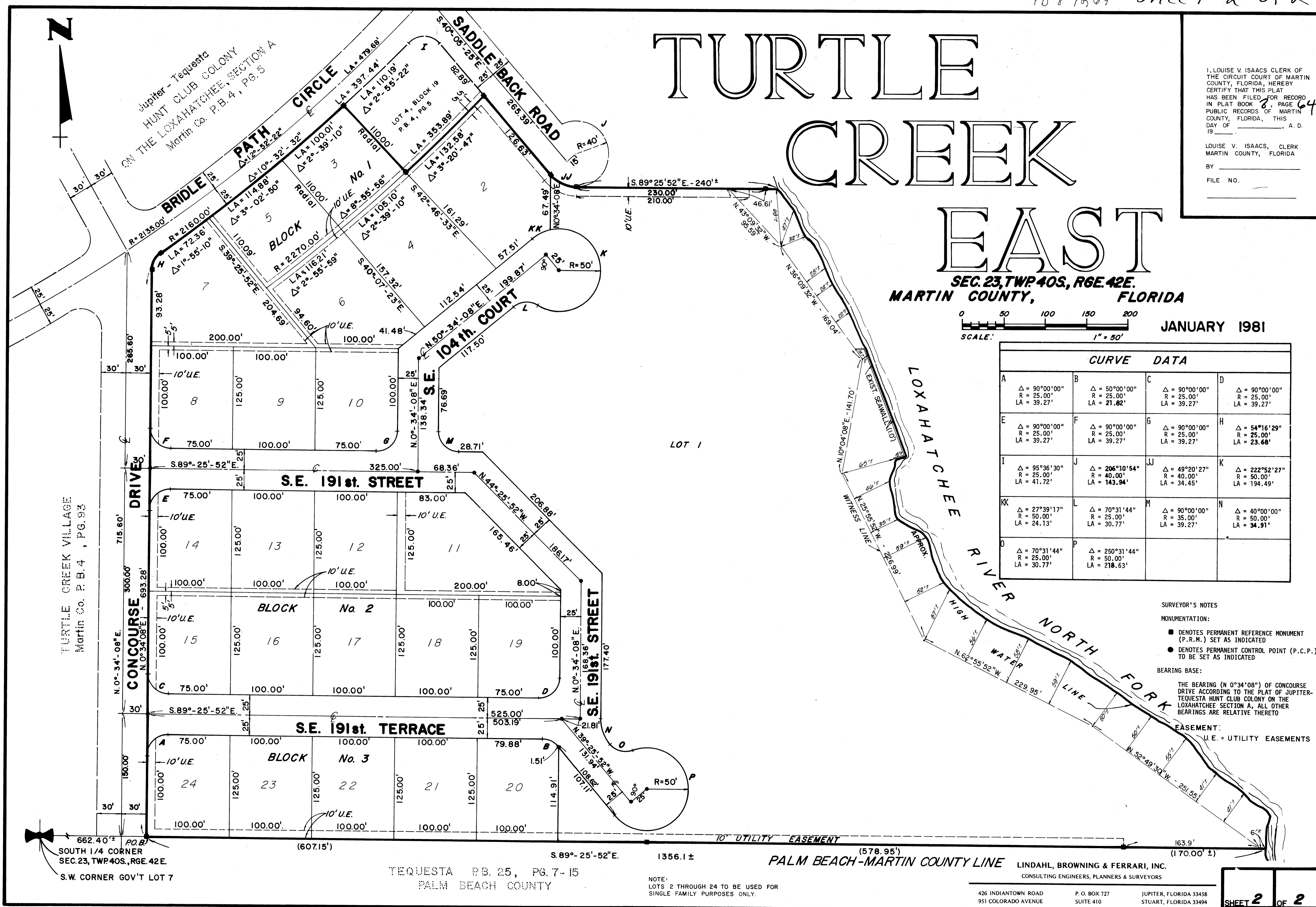
- DENOTES PERMANENT REFERENCE MONUMENT (P.R.M.) SET AS INDICATED
- DENOTES PERMANENT CONTROL POINT (P.C.P.) TO BE SET AS INDICATED

BEARING BASE:

THE BEARING (N 0°34'08") OF CONCOURSE DRIVE ACCORDING TO THE PLAT OF JUPITER-TEQUESTA HUNT CLUB COLONY ON THE LOXAHATCHEE SECTION A, ALL OTHER BEARINGS ARE RELATIVE THERETO

EASEMENT:

U.E. = UTILITY EASEMENTS



TURTLE CREEK VILLAGE
Martin Co. P.B. 4, PG. 93

662.40' ±
SOUTH 1/4 CORNER
SEC. 23, TWP. 40S., R6E. 42E.
S.W. CORNER GOV'T LOT 7

TEQUESTA P.B. 25, PG. 7-15
PALM BEACH COUNTY

NOTE:
LOTS 2 THROUGH 24 TO BE USED FOR
SINGLE FAMILY PURPOSES ONLY.

1356.1 ± (578.95')
PALM BEACH-MARTIN COUNTY LINE

LINDAHL, BROWNING & FERRARI, INC.
CONSULTING ENGINEERS, PLANNERS & SURVEYORS

426 INDIANTOWN ROAD
951 COLORADO AVENUE
JUPITER, FLORIDA 33458
STUART, FLORIDA 33494